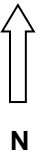


**KEY:**

- TIF DISTRICT:
- FEDERAL HISTORIC DISTRICT:
- RAILROAD TRACKS:

## CENTRAL AREA Springfield, IL.



### Tax Increment and Federal Historic Districts

Start Date: December 29, 1981  
 End Date: December 27, 2004  
 Extended till: December 31, 2016