

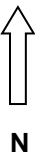
STATE  
CAPITOL  
COMPLEX




## CENTRAL AREA Springfield, IL.


### Tax Increment and Federal Historic Districts

Start Date: December 29, 1981  
 End Date: December 27, 2004  
 Extended till: December 31, 2016



**KEY:**

TIF DISTRICT: 

FEDERAL HISTORIC DISTRICT: 

RAILROAD TRACKS: 